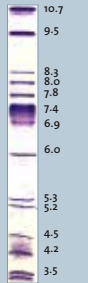


Protein Standards

SERVA offers a variety of different protein standards for isoelectric focusing (IEF), SDS and native PAGE as well as for 2D gel electrophoresis. Choose the best suited from over 15 different protein standards for your application.

SERVA Protein Standards for Isoelectric Focusing (IEF)

- Ready-to-use or lyophilized protein markers
- Applicable to all IEF gels (vertical, horizontal)
- Purified protein components, salt-free
- 13 isoforms featuring characteristic patterns (pI 3.5 – 10.7)



Separation of SERVA IEF Marker 3 – 10 Liquid Mix (cat. no. 39212) on SERVALYT™ PRECOTES™ 3 – 10 (cat. no. 42867)

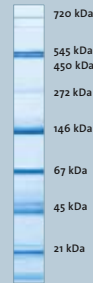
SERVA Protein Standards for Native PAGE

SERVA Native Marker Liquid Mix for BN/CN PAGE

- Ready-to-use
- Contains 6 different proteins
- Ranging under native conditions from 21 to 720 kDa

Protein Molecular Weight Standards

- Set of 8 single proteins, lyophilized, 25 mg each
- Ranging from 12.4 to 450 kDa



SERVA Native Marker Liquid Mix for BN/CN PAGE (cat. no. 39219) separated by clear native PAGE on SERVAGEl™N 4 – 16 % (cat. no. 43252)

- Determine the pI of your unknown protein samples
- Determine the molecular weight of your unknown sample under native conditions

SERVA Protein Standard for Western Blotting

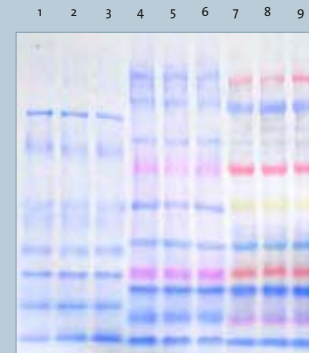
- Ready-to-use
- Consists of 8 recombinant proteins (16 to 215 kDa)
- Contains antibody binding site
- Even signal intensity



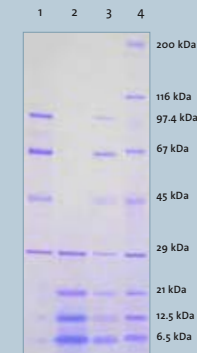
SERVA Western Blot Protein Standard (cat. no. 39256)

SERVA Protein Standards for SDS PAGE

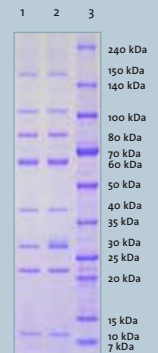
- Ready-to-use or lyophilized protein markers
- Unstained or covalently stained protein markers



SERVA Prestained Protein Standards (lane 1-3: cat. no. 39216, lane 4-6: cat. no. 39252, lane 7-9: cat. no. 39255), separated on SERVAGEl Neutral pH 7.4 Gradient.



SERVA Unstained Protein Standards I (lane 1: cat. no. 39208, lane 2: cat. no. 39209, lane 3: cat. no. 39207, lane 4: cat. no. 39215), separated on SERVAGEl Neutral pH 7.4 Gradient



SERVA Unstained Protein Standards II (lane 1: cat. no. 39217, lane 2: cat. no. 39218, lane 3: cat. no. 39249), separated on SERVAGEl Neutral pH 7.4 Gradient

- Determine the molecular weight of your unknown protein samples
- Monitor the separation performance and blotting efficiency
- Monitor the antibody binding efficiency in your western blot experiment